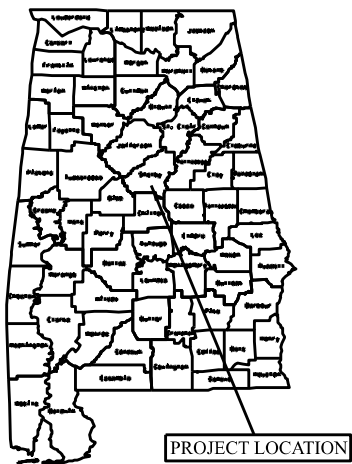


STATE	PROJECT NUMBER	FISCAL YEAR	SHEET NO	LAST SHEET NO
AL	SCP 59-979-25	2025	1	5

# SHELBY COUNTY HIGHWAY DEPARTMENT

## PLANS OF PROPOSED PROJECT SCP 59-979-25

### "JG" SURFACE TREATMENT FOR VARIOUS COUNTY ROADS



STATE LOCATOR



COUNTY ENGINEER  
DAVID WILLINGHAM, P.E.



COUNTY COMMISSIONERS	
DISTRICT #1 KEVIN MORRIS	DISTRICT #2 TOMMY EDWARDS
DISTRICT #3 JON PARKER	DISTRICT #4 WARD WILLIAMS
DISTRICT #5 ELWYN BEARDEN	DISTRICT #6 JOSH SISK
DISTRICT #7 LINDSEY ALLISON	DISTRICT #8 RICK SHEPHERD
DISTRICT #9 DR. ROBBIE HAYES	

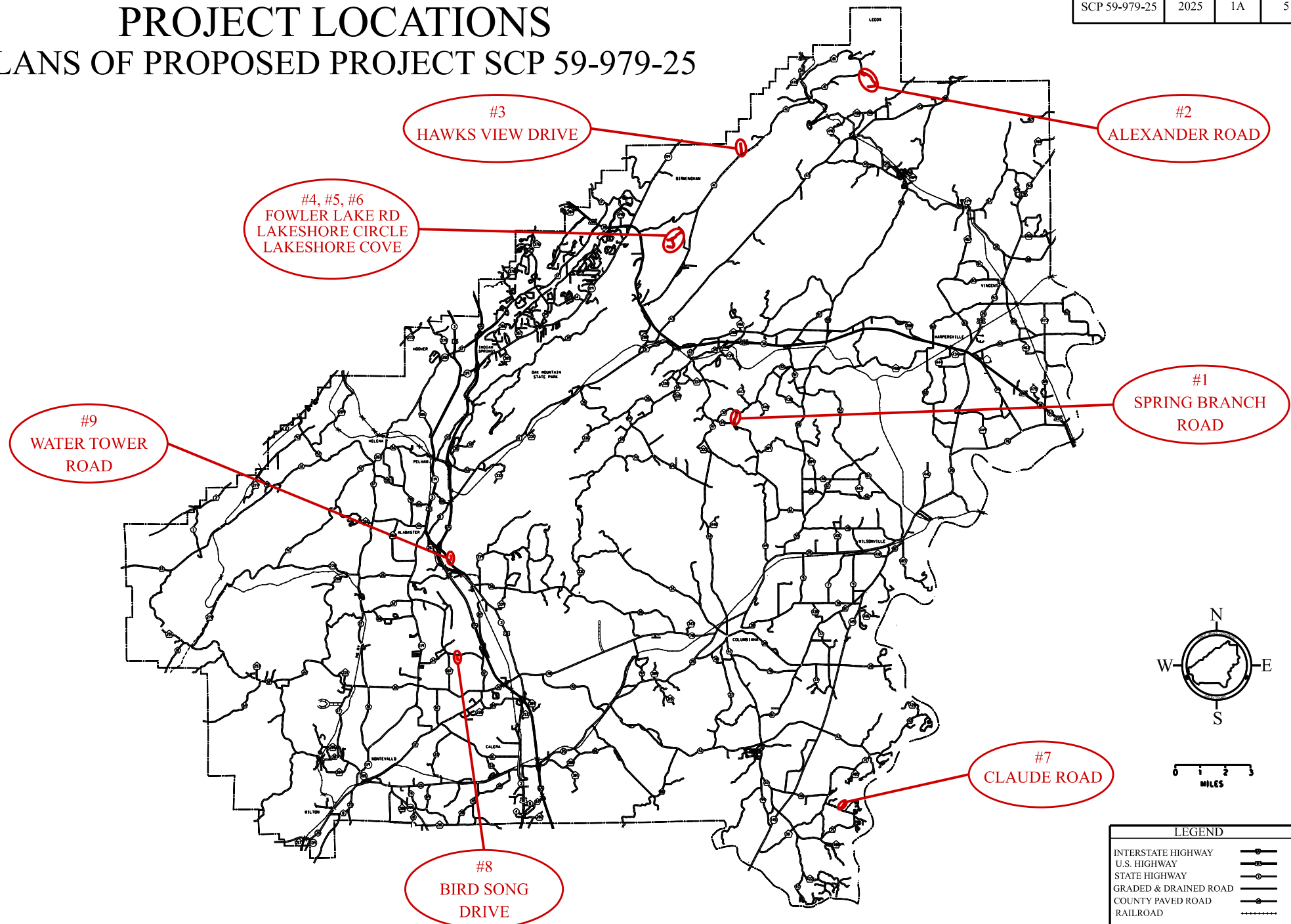
NOTE : THESE PLANS HAVE BEEN PREPARED TO CONFORM WITH ALABAMA DEPARTMENT OF TRANSPORTATION STANDARD SPECIFICATIONS DATED 2022.

AUGUST 18, 2025

PROJECT NUMBER	FISCAL YEAR	SHEET NO.	LAST SHEET
SCP 59-979-25	2025	1A	5

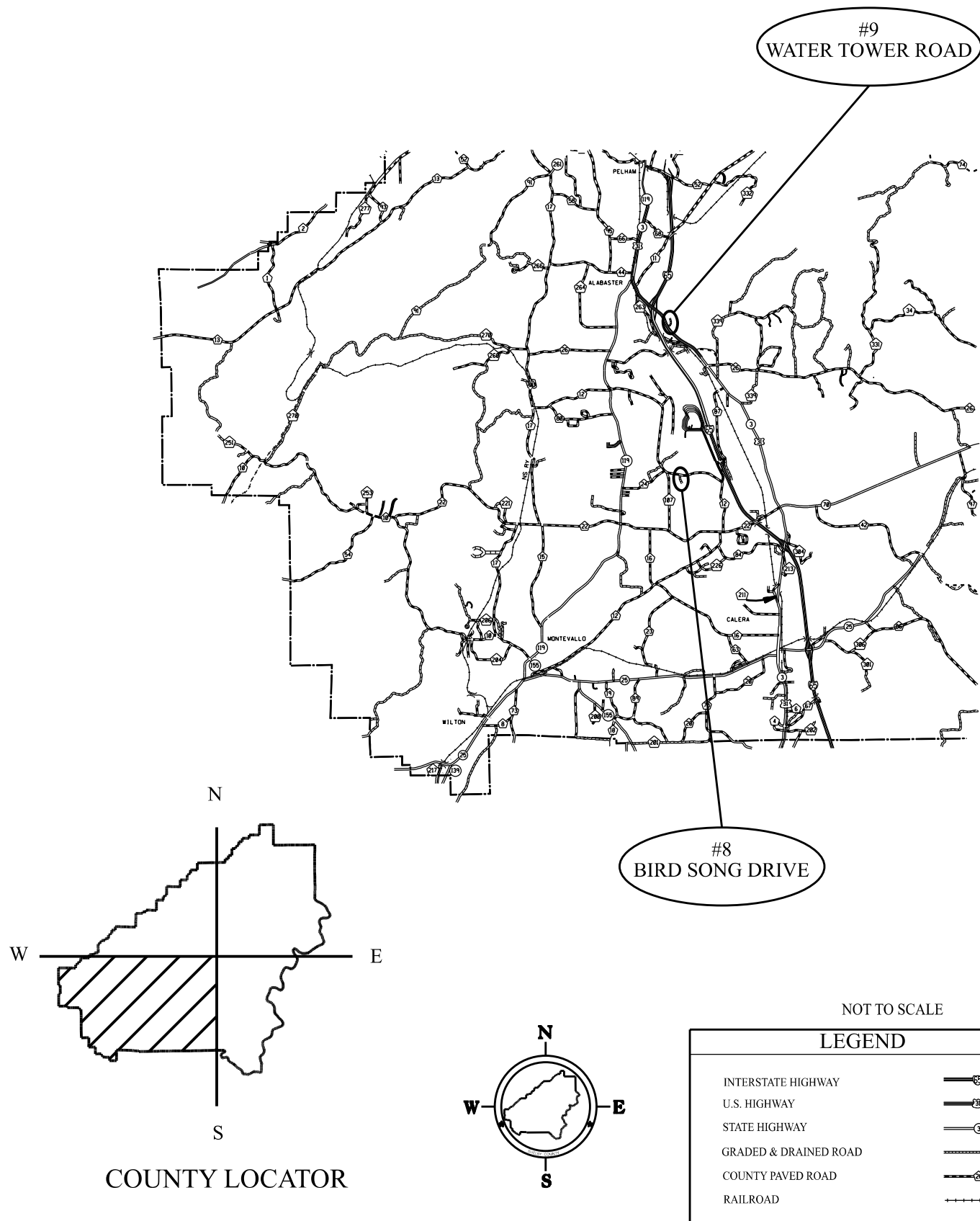
# PROJECT LOCATIONS

## PLANS OF PROPOSED PROJECT SCP 59-979-25



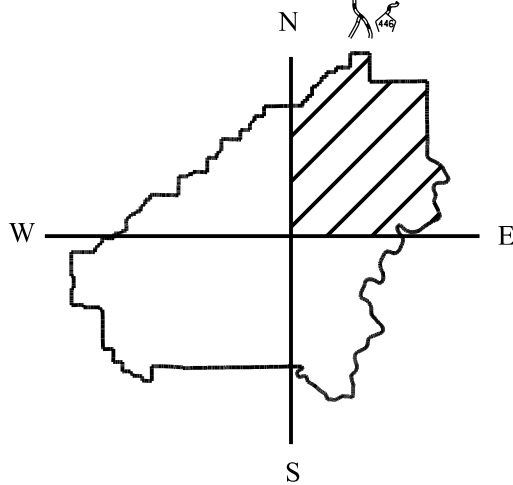
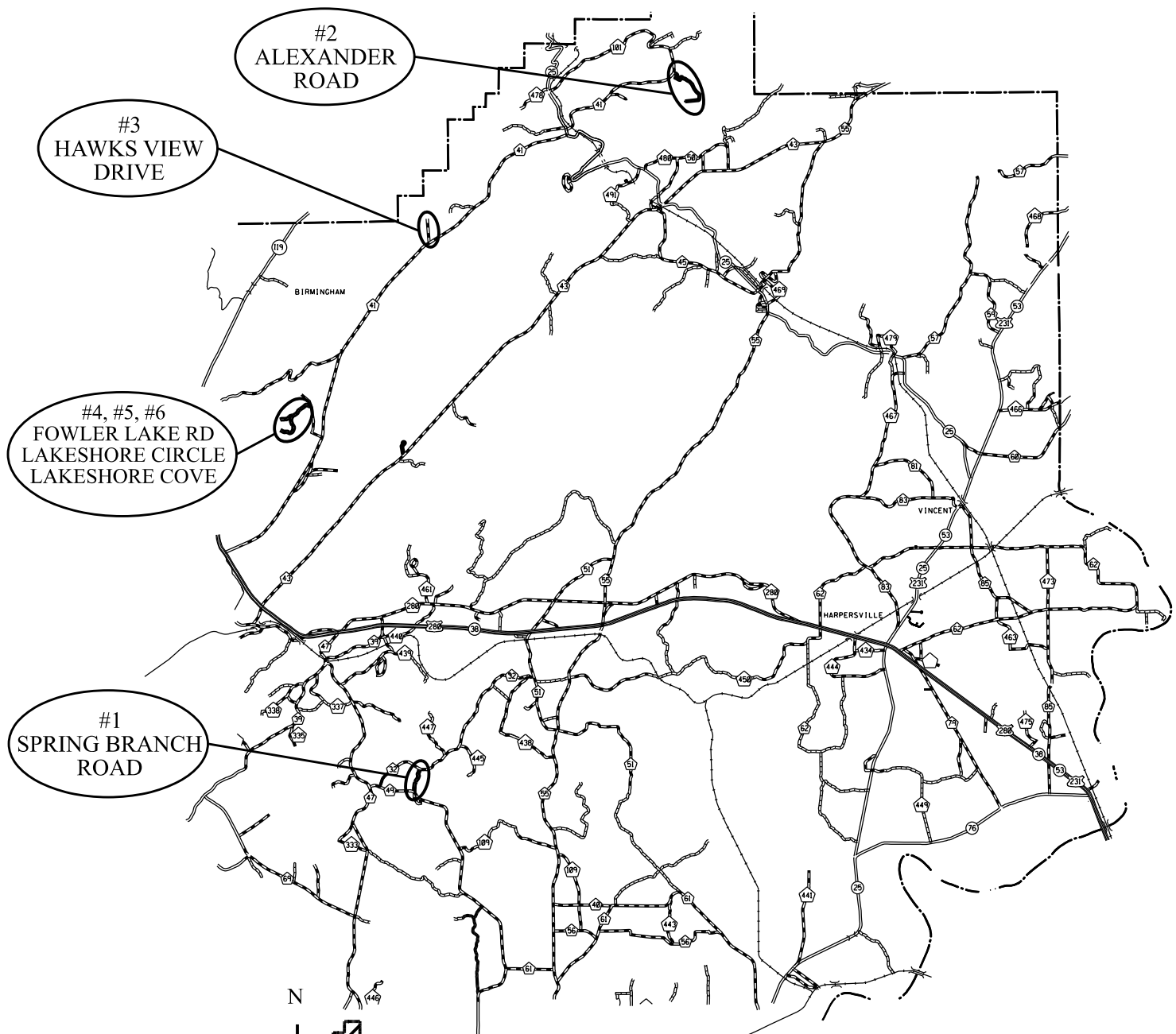
# PROJECT LOCATIONS

## PLANS OF PROPOSED PROJECT SCP 59-979-25

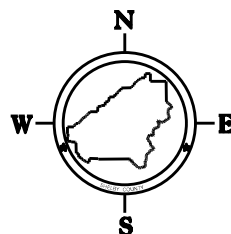


# PROJECT LOCATIONS

## PLANS OF PROPOSED PROJECT SCP 59-979-25



COUNTY LOCATOR



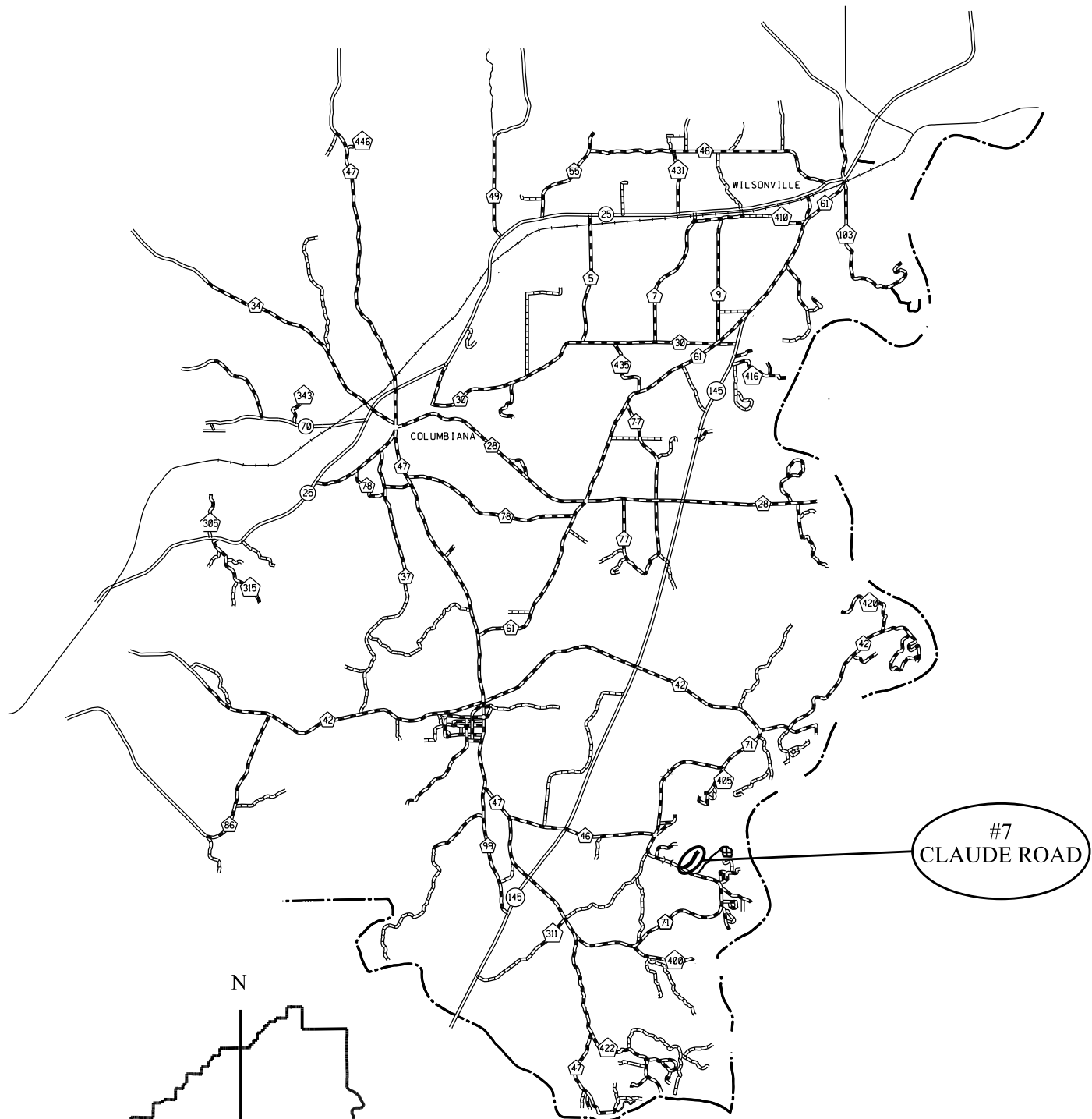
NOT TO SCALE

## LEGEND

INTERSTATE HIGHWAY	
U.S. HIGHWAY	
STATE HIGHWAY	
GRADED & DRAINED ROAD	
COUNTY PAVED ROAD	
RAILROAD	

# PROJECT LOCATIONS

## PLANS OF PROPOSED PROJECT SCP 59-979-25



NOT TO SCALE

**LEGEND**

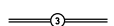
INTERSTATE HIGHWAY



U.S. HIGHWAY



STATE HIGHWAY



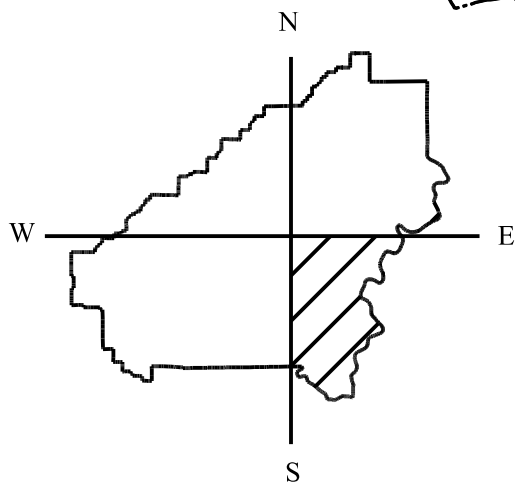
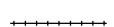
GRADED &amp; DRAINED ROAD



COUNTY PAVED ROAD



RAILROAD



COUNTY LOCATOR

PROJECT NUMBER	FISCAL YEAR	SHEET NO
SCP 59-979-25	2025	1E

INDEX TO SHEETS  
PROJECT NO. SCP 59-979-25  
SHELBY COUNTY

SHEET NO. 1	TITLE SHEET
SHEET NO. 1A -1D	PROJECT LOCATIONS
SHEET NO. 1E	INDEX TO SHEETS
SHEET NO. 2-2A	TYPICAL SECTIONS
SHEET NO. 2B	PROJECT NOTES
SHEET NO. 2C-2D	TRAFFIC CONTROL NOTES
SHEET NO. 3	SUMMARY OF QUANTITIES & UNIT DESCRIPTIONS
SHEET NO. 4-5	TRAFFIC CONTROL PLANS

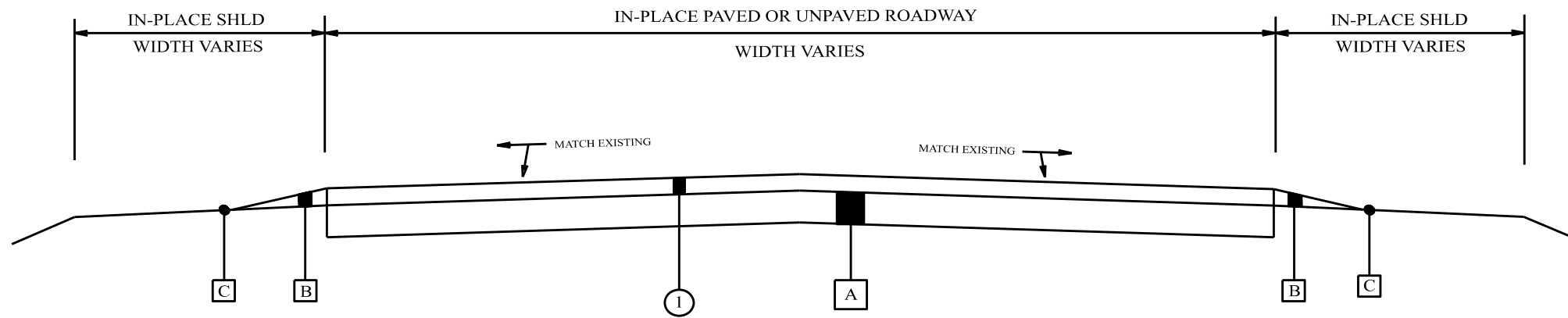
THE FOLLOWING IS A LIST OF STANDARD OR SPECIAL DRAWINGS CONTAINED IN THE ALABAMA DEPARTMENT OF TRANSPORTATION SPECIAL AND STANDARD DRAWINGS BOOKLET DATED 2025 WHICH APPLY TO THIS PROJECT:

<u>INDEX NO.</u>	<u>DRAWING NO.</u>	<u>DESCRIPTION</u>
20901	MB-209-1	DETAILS OF MOUNTING MAILBOXES (SHEET 1 OF 3)
20902	MB-209-1	DETAILS OF MOUNTING MAILBOXES (SHEET 2 OF 3)
20903	MB-209-1	DETAILS OF MOUNTING MAILBOXES (SHEET 3 OF 3)
68004	TO-107	DETAILS OF INTERSECTION AND TURNOUTS
68019	SSEC-1	STANDARD SUPERELEVATION OF CURVES (SHEET 4 OF 14)
71017	IHS-710-12	DETAILS OF ROADWAY SIGN POSTS (SMALL CHANNEL AND TUBULAR SECTION)
71032	IHS-710-21	DETAILS FOR LOCATION AND MOUNTING STANDARD FLAT PANEL SIGNS ON U-CHANNEL AND TUBULAR POSTS
71090	SHS-26	STANDARD HIGHWAY SIGNS
71092	SHS-28	STANDARD HIGHWAY SIGNS
71093	SHS-29	STANDARD HIGHWAY SIGNS
71094	SHS-30	STANDARD HIGHWAY SIGNS
71095	SHS-31	STANDARD HIGHWAY SIGNS
74007	TCD-100	DETAILS FOR TRAFFIC CHANNELIZATION DEVICES

PROJECT NUMBER	FISCAL YEAR	SHEET NO.	LAST SHEET
SCP 59-979-25	2025	2	5

# TYPICAL SECTION

THIS TYPICAL SECTION APPLIES TO ALL UNITS (#1 - #9)

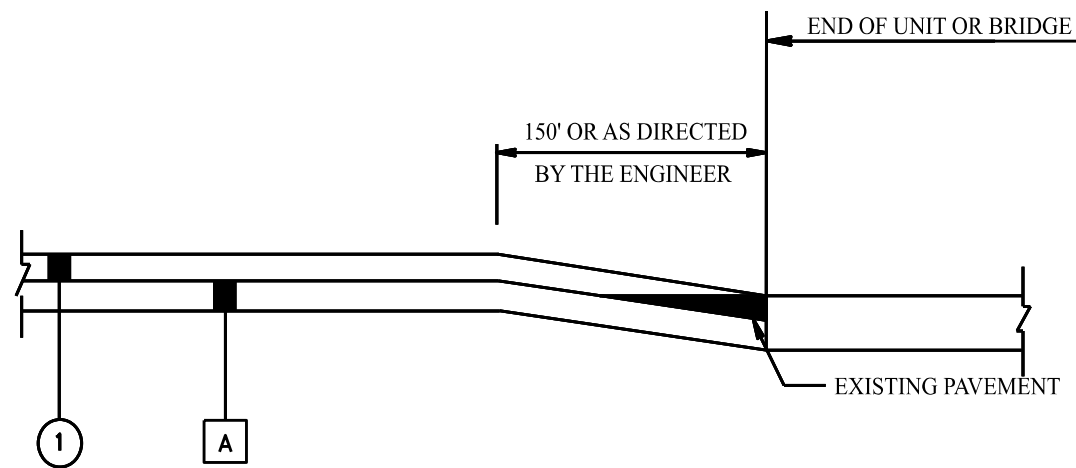


## LEGEND

ITEM	UNIT	DESCRIPTION
①	401B-106	SQ YD
		REQ'D BITUMINOUS TREATMENT JG (WITH POLYMER ADDITIVE)
[A]		IN-PLACE SUBGRADE OR EXISTING SURFACE TREATMENT (PREPARED BY OTHERS; RETAIN)
[B]		SHOULDER WORK (PERFORMED BY SHELBY COUNTY IF NECESSARY)
[C]		IN-PLACE SHOULDER (RETAIN)

PROJECT NUMBER	FISCAL YEAR	SHEET NO.	LAST SHEET
SCP 59-979-25	2025	2A	5

# TYPICAL SECTION



SKETCH SHOWING PAVEMENT TIE AT BEGIN/END OF UNIT,  
AT BRIDGE ENDS AND RR/XING

## LEGEND

ITEM	UNIT	DESCRIPTION
①	401B-106	SQ YD
		REQ'D BITUMINOUS TREATMENT JG (WITH POLYMER ADDITIVE)
A	IN-PLACE SUBGRADE OR EXISTING SURFACE TREATMENT (PREPARED BY OTHERS; RETAIN)	

NOTE: EXISTING PAVEMENT TO BE REMOVED IN A SUFFICIENT AMOUNT TO ALLOW FOR FULL DEPTH OVERLAY. THIS WORK SHALL BE A SUBSIDIARY OBLIGATION OF THE OVERLYING LAYER AS DIRECTED BY THE ENGINEER.



PROJECT NUMBER	FISCAL YEAR	SHEET NO
SCP 59-979-25	2025	2B

**PROJECT NOTES**  
**PROJECT NO. SCP 59-979-25**  
**SHELBY COUNTY**

- 201: THE MINIMUM REQUIREMENTS FOR PAVING OF TURNOUTS SHALL BE AS FOLLOWS, UNLESS OTHERWISE DIRECTED BY THE ENGINEER:
- a. CITY STREETS, COUNTY ROADS AND STATE HIGHWAYS--PAVE TO THE BACK OF RADIUS WITH JOINTS MILLED BY MILLING MACHINE FULL WIDTH AS DESIGNATED BY PROJECT ENGINEER.
  - b. BUSINESS DRIVEWAYS--PAVE TO THE BACK OF THE EXISTING SHOULDER.
  - c. ALL OTHER TURNOUTS--PAVE A MINIMUM OF 3'.
  - d. PARTICULAR ATTENTION WILL BE GIVEN TO THE SLOPE OF ALL DRIVES EITHER RESIDENTIAL OR COMMERCIAL TO ASSURE EASY PASSAGE ON AND OFF THE ROADWAY. IT WILL BE THE RESPONSIBILITY OF THE CONTRACTOR TO EITHER MAKE NECESSARY ADJUSTMENTS DURING ONGOING PHASES OF PAVING OPERATION OR ADJUST AT A LATER DATE AS DIRECTED BY THE PROJECT ENGINEER.
- 202: RESURFACING OVERLAYS SHALL MATCH EXISTING SUPERELEVATION OF HORIZONTAL CURVE.
- 203: ALL SHOULDERS ON ALL UNITS SHALL BE CLIPPED AND BROOMED TO THE ENGINEER'S SATISFACTION PRIOR TO ANY AND ALL RESURFACING.
- 204: ALL EXCESS STONE WILL BE THE RESPONSIBILITY OF THE CONTRACTOR TO REMOVE FROM INTERSECTIONS, PARKING LOTS, DRIVEWAYS, AND ALL PUBLIC PROPERTIES. ALL EXCESS STONE SHALL BE REMOVED DAILY, UNLESS OTHERWISE DIRECTED BY THE PROJECT ENGINEER.
- 205: CONTRACTOR SHALL TIE BEGINNING AND ENDING OF PROJECT AND AT BRIDGE CROSSINGS AS SHOWN IN THE SKETCH ON SHEET 2B.
- 206: MOBILIZATION AND CONSTRUCTION FUEL SHALL BE SUBSIDIARY OBLIGATION OF THE CONTRACT.
- 207: EXCESS MATERIAL THAT CANNOT BE USED TO FLUSH SLOPES WITHIN A PROJECT AREA SHALL BE WASTED AS DIRECTED BY THE PROJECT ENGINEER.
- 208: CONTRACTOR IS ULTIMATELY RESPONSIBLE FOR THE CONTINUOUS AND PROPER OPERATION OF ALL EXISTING UTILITIES. THE COUNTY ENGINEER SHALL COORDINATE RELOCATION OF UTILITIES WITH THE AFFECTED UTILITY COMPANIES.
- 209: CONTRACTOR IS RESPONSIBLE FOR MAKING CONTACT WITH LOCAL WATER AUTHORITIES AND OBTAINING PERMISSION OR A METER WITH WHICH TO ACQUIRE WATER FOR USE DURING THE PROJECT.
- 210: ANY DAMAGE TO IN-PLACE PAVING, CURB AND GUTTER, SIDEWALK, GRASSING ETC. SHALL BE REPAIRED BY THE CONTRACTOR TO THE SATISFACTION OF THE ENGINEER AT NO COST TO THE PROJECT.

PROJECT NUMBER	FISCAL YEAR	SHEET NO
SCP 59-979-25	2025	2C

**TRAFFIC CONTROL NOTES**  
**PROJECT NO. SCP 59-979-25**  
**SHELBY COUNTY**

700. THE TRAFFIC CONTROL PLAN IS DEVELOPED IN CONFORMANCE WITH THE MANUAL ON UNIFORM TRAFFIC CONTROL DEVICES PART 6, 2009 EDITION. THE TRAFFIC CONTROL DEVICES INDICATED REPRESENT CONDITIONS KNOWN DURING PLAN DEVELOPMENT. IN THE EVENT ACTUAL PHYSICAL CONDITIONS WARRANT ADDITIONAL TRAFFIC CONTROL DEVICES, THEY SHALL BE INSTALLED IN CONFORMANCE WITH THE MUTCD PART 6 AS DIRECTED BY THE ENGINEER. COST SHALL BE PAID FOR AS A SUBSIDIARY OBLIGATION.
701. THE CONTRACTOR WILL BE PERMITTED TO DEVELOP HIS OWN TRAFFIC CONTROL PLAN TO BE USED IN LIEU OF THIS TRAFFIC CONTROL PLAN IF APPROVED BY THE ENGINEER. A CONTRACTOR DEVELOPED TRAFFIC CONTROL PLAN SHALL BE A SUBSIDIARY COST OF THE CONTRACT.
702. THE CONTRACTOR SHALL ENSURE THAT ALL TRAFFIC CONTROL DEVICES ARE PLACED AS REQUIRED IN THE TRAFFIC CONTROL PLANS AND ARE IN SERVICEABLE CONDITION AT ALL TIMES.
703. ALL SIGNS AND BARRICADES MAY BE ADJUSTED BY THE ENGINEER FOR THE SAFETY OF THE TRAVELING PUBLIC WHEN NECESSARY.
704. ADDITIONAL SIGNS MAY BE REQUIRED IF DEEMED NECESSARY BY THE ENGINEER. ADDITIONAL ITEMS TO BE A SUBSIDIARY COST OF THE CONTRACT.
705. NO DIRECT PAYMENT WILL BE MADE FOR REMOVING, RELOCATING, OR COVERING OF IN PLACE SIGNS, BARRELS, BARRICADES, OR OTHER TRAFFIC CONTROL DEVICES AS REQUIRED IN THIS TRAFFIC CONTROL PLAN (SEE SPECIAL DRAWING NO. TCD-100 IN THE ALABAMA DEPARTMENT OF TRANSPORTATION'S SPECIAL AND STANDARD HIGHWAY DRAWINGS, 2024 EDITION). COST TO BE A SUBSIDIARY OBLIGATION OF THE CONTRACT.
706. THE QUANTITIES SHOWN ON THE TRAFFIC CONTROL PLAN SHEET ARE CONSIDERED TO BE THE MINIMUM REQUIREMENT FOR HANDLING TRAFFIC AT ANY GIVE TIME DURING CONSTRUCTION.
707. THE CONTRACTOR IS TO REMOVE, RELOCATE, OR COVER DURING CONSTRUCTION AND THEN RESET OR UNCOVER UPON COMPLETION OF A PARTICULAR SECTION ANY CONFLICTING IN-PLACE ROADWAY SIGNS AS DIRECTED BY THE ENGINEER. COST TO BE A SUBSIDIARY OBLIGATION OF THE CONTRACT.
708. ALL CONSTRUCTION SIGNS PLACED BEFORE WORK BEGINS SHALL BE COVERED WITH BLACK PLASTIC OR SOME OTHER SUITABLE MATERIAL SO THAT THE SIGNS ARE NOT VISIBLE UNTIL WORK IS IN PROGRESS.
709. ALL TRAFFIC CONTROL DEVICES SHALL BE A SUBSIDIARY COST OF THE CONTRACT.
710. ALL BLACK ON ORANGE CONSTRUCTION SIGNS SHALL BE FABRICATED USING TYPES IV OR VIII FLUORESCENT ORANGE REFLECTIVE SHEETING MATERIAL FOR THE SIGN BACKGROUND.
711. DURING NON-WORKING HOURS NO EQUIPMENT OR MATERIAL SHALL BE PARKED OR STORED CLOSER THAN 30 FEET TO THE EDGE OF ANY ROADWAY CARRYING TRAFFIC. WHEN THIS IS NOT PRACTICAL, IT SHALL BE PLACED IN AN AREA APPROVED BY THE ENGINEER AND DELINEATED BY REFLECTORIZED DRUMS. THIS INCLUDES STORAGE OF TRAFFIC CONTROL DEVICES SUCH AS TRAILER MOUNTED OR OTHER TEMPORARY SIGNS, BARRICADES, DRUMS, ETC., WHICH ARE NOT IN USE DURING NON-WORKING HOURS. THESE ARE TO BE FURNISHED BY THE CONTRACTOR WITHOUT COST TO SHELBY COUNTY.

PROJECT NUMBER	FISCAL YEAR	SHEET NO
SCP 59-979-25	2025	2D

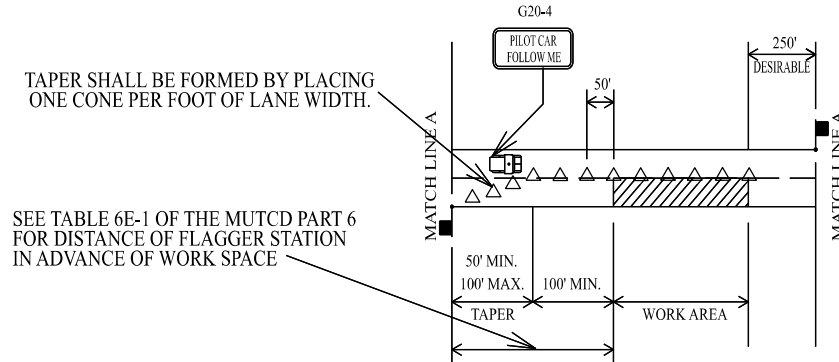
TRAFFIC CONTROL NOTES  
PROJECT NO. SCP 59-979-25  
SHELBY COUNTY

- 712: WHERE THE LOCATION OF A REQUIRED SIGN FALLS IN A DRIVEWAY, SIDEWALK, BRIDGE, ETC., OR WHERE THE VISIBILITY OF A SIGN IS LIMITED TO THE TRAVELING PUBLIC, THE LOCATION SHALL BE ADJUSTED AS DIRECTED BY THE ENGINEER.
- 713: THE CONTRACTOR SHALL PLACE ALL ADVANCE WARNING SIGNS BEFORE PROCEEDING WITH THIS WORK.
- 714: ALL VEHICLES, EQUIPMENT, PERSONNEL (EXCEPT FLAGGERS), AND THEIR ACTIVITIES, ARE RESTRICTED AT ALL TIMES TO ONE SIDE OF THE PAVEMENT UNLESS OTHERWISE AUTHORIZED BY THE ENGINEER.
- 715: CONTRACTOR SHALL MAINTAIN AT LEAST ONE ACCESS TO BUSINESSES AND RESIDENCES DURING ALL PHASES OF CONSTRUCTION.
- 716: CONSTRUCTION SIGNS MOUNTED ON TEMPORARY SUPPORTS SHALL BE MOUNTED AT A MINIMUM HEIGHT OF 5 FEET.
- 717: FLAGGERS SHALL BE PROPERLY ATTIRED, EQUIPPED WITH STAFF MOUNTED STOP/SLOW PADDLES IN SIGHT OF EACH OTHER, OR HAVE DIRECT COMMUNICATION AT ALL TIMES. FLAGGER STATION LOCATION MAY BE VARIED FROM THOSE SHOWN BASED ON ROADWAY CONDITIONS AT THE TIME OF THE LANE CLOSURE.
- 718: FLAGGERS ARE TO BE USED WHEN DIRECTED BY THE ENGINEER. SIGNS SHALL BE PLACED AT THE APPROPRIATE TIME, AND SHALL BE COVERED OR REMOVED WHEN FLAGGERS ARE NOT ON DUTY AND DURING NON-WORKING HOURS.
- 719: FOR MOVING OPERATIONS, THE TRAFFIC CONES MAY BE DELETED IF THE FLAGGERS ARE IN SIGHT OF EACH OTHER, OR IF A PILOT CAR IS USED ON A TWO LANE ROADWAY.
- 720: DURING THE WIDENING OR RESURFACING OF ANY ROADWAY CARRYING TRAFFIC, THE CONTRACTOR SHALL ADVISE THE MOTORISTS OF ANY EDGE OF PAVEMENT DROP-OFFS 3 INCHES OR GREATER BY PLACING SHOULDER DROP-OFF SIGNS EVERY ½ MILE BEGINNING PRIOR TO THE WIDENING OR RESURFACING. REQUIRED SHOULDER WORK TO ELIMINATE THE DROP-OFFS SHALL BE PURSUED IN AN EXPEDITIOUS MANNER FOLLOWING THE WIDENING AND/OR RESURFACING.
- 721: DURING THE WIDENING OR RESURFACING OF ANY ROADWAY CARRYING TRAFFIC, THE CONSTRUCTION ZONE SHALL NOT BE LONGER THAN 2 MILES AT ANY GIVEN TIME.

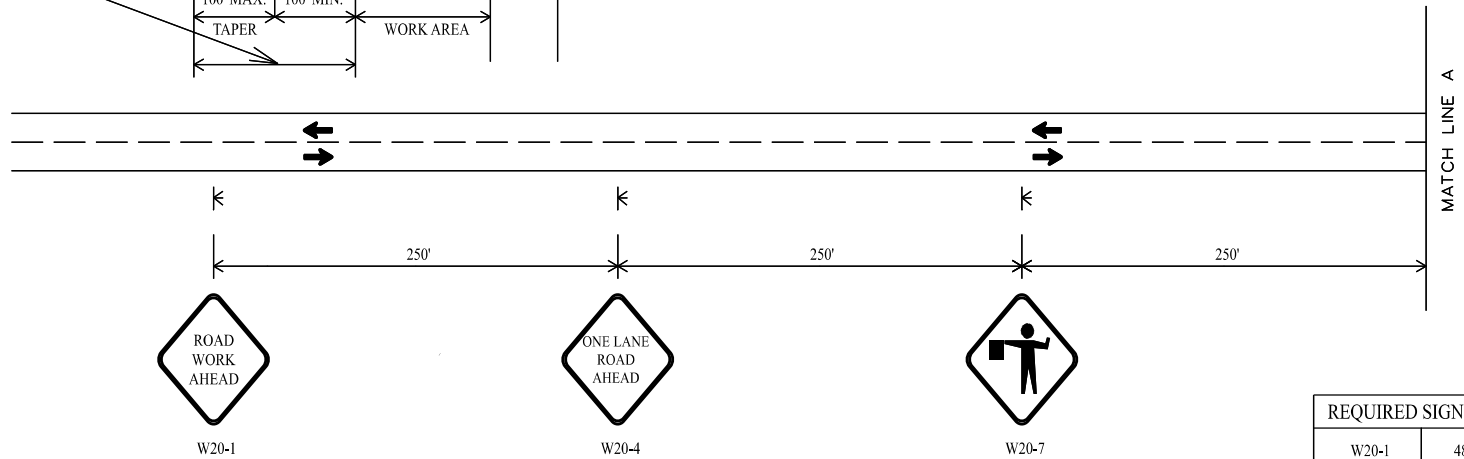
SUMMARY OF QUANTITIES AND UNIT DESCRIPTIONS

UNIT #	COUNTY ROAD NAME/NUMBER	DESCRIPTION	PAVED LENGTH (LF)	UNPAVED LENGTH (LF)	WIDTH (LF)	BITUMINOUS TREATMENT JG (WITH POLYMER ADDITIVE) (SY)	COMMENT
1	SPRING BRANCH ROAD	EAST OFF CR-49, SOUTH OF CR-47	1,076	1,443	14-17	4,519	JG TREATMENT ON BOTH PAVED & UNPAVED
2	ALEXANDER ROAD	EAST OFF CR-41, NORTH OF DUNNAVANT	0	3,576	15	5,960	JG TREATMENT ON UNPAVED
3	HAWKS VIEW DRIVE	NORTH OFF CR-41 SOUTH OF WEHAPA LAKE	2,480	0	14	3,858	JG TREATMENT ON PAVED
4	FOWLER LAKE ROAD	WEST OFF HIGHLAND VILLAGE TRAIL IN MT. LAUREL	0	118	16	210	JG TREATMENT ON UNPAVED
5	LAKESHORE DRIVE	WEST OFF HIGHLAND VILLAGE TRAIL IN MT. LAUREL	0	1,359	15	2,265	JG TREATMENT ON UNPAVED
6	LAKESHORE COVE	WEST OFF HIGHLAND VILLAGE TRAIL IN MT. LAUREL	0	2,851	14	4,435	JG TREATMENT ON UNPAVED
7	CLAUDE ROAD	NORTH OFF CR-71 AT LAY LAKE	1,115	0	19	2,354	JG TREATMENT ON PAVED
8	BIRD SONG DRIVE	SOUTH OFF CR-12 WEST OF CR-87	0	880	12	1,173	JG TREATMENT ON UNPAVED
9	WATER TOWER ROAD	EAST OFF US-31 IN ALABASTER	0	720	16	1,280	JG TREATMENT ON UNPAVED
TOTALS:			4,671	10,947		26,054	

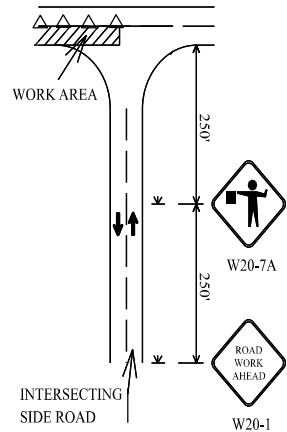
# TRAFFIC CONTROL PLAN SHEET



TWO LANE HIGHWAY, ONE LANE CLOSURE



REQUIRED SIGN SIZES	
W20-1	48" X 48"
W20-4	48" X 48"
W20-7	48" X 48"
G20-4	36" X 18"



## TRAFFIC CONTROL FOR INTERSECTING SIDE ROADS WITHIN WORK AREA

NOTE: THE W20-1 AND W20-7A SIGNS TO BE USED ON INTERSECTING ROADS SHALL BE 36"X36" IN SIZE. THE TEMPORARY MOUNTED W20-1 ROAD WORK AHEAD SIGN SHOWN ON THE SIDE ROAD WILL NOT BE REQUIRED IF ONE IS ALREADY POST MOUNTED ON THE SIDE STREET.

### LEGEND

- TEMPORARY MOUNTED SIGN
- POST MOUNTED SIGN
- CONE WITH BALAST
- FLAGGER

DESIGN BUREAU SPECIAL DRAWING DETAILS FOR TRAFFIC CONTROL FOR RESURFACING TWO LANE HIGHWAYS		
DRAWN BY: _____	SPECIAL PROJECT DETAIL	INDEX NO.
DATE DRAWN: _____	SHEET TITLE	ROUTE
		VARIOUS

NOT TO SCALE

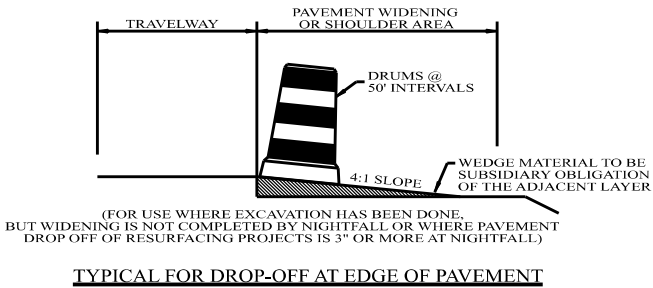
PROJECT NUMBER  
SCP 59-979-25

FISCAL YEAR  
2025

SHEET NO  
4

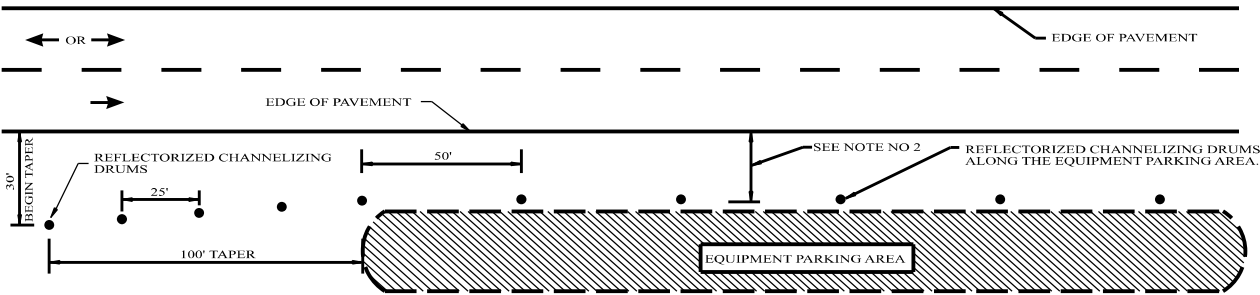
TEMPORARY TRAFFIC CONTROL PLAN SHEET

PROJECT NUMBER	FISCAL YEAR	SHEET NO
SCP 59-979-25	2025	5



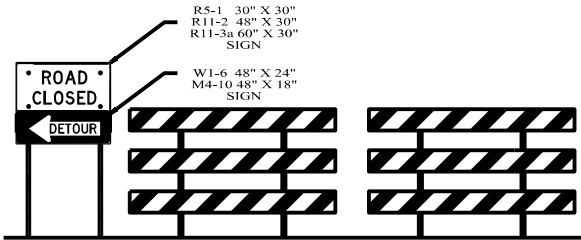
NOTE:  
THE CONTRACTOR IS TO CONSTRUCT A WEDGE OF UNCLASSIFIED EXCAVATION OR CRUSHED AGGREGATE BASE. THE COST OF PLACING AND REMOVAL SHALL BE A SUBSIDIARY OBLIGATION OF THE ADJACENT LAYER.

CHANNELIZING DRUMS SHALL BE PLACED AT 50 FT INTERVALS.

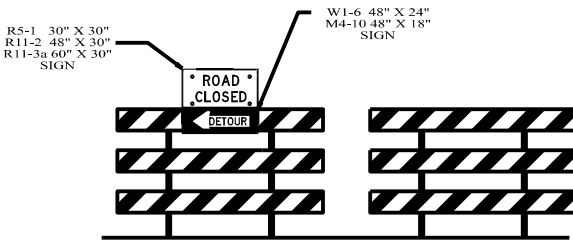


- NOTES:
- SEE GENERAL TRAFFIC CONTROL PLAN NOTE NO. 711.
  - DRUMS TO BE AS FAR AS PRACTICAL FROM EDGE OF PAVEMENT. MINIMUM DESIRABLE DISTANCE IS 15 FEET FOR FREEWAY TYPE FACILITIES AND 10 FEET FOR OTHER FACILITIES. FOR UNUSUAL CONDITIONS, SUCH AS SPECIAL EQUIPMENT OR LIMITED AVAILABLE SPACE, DIMENSIONS LESS THAN DESIRABLE SHALL BE AS DIRECTED BY THE ENGINEER.
  - ALL DEVICES TO BE FURNISHED BY THE CONTRACTOR WITHOUT COST TO THE COUNTY.

**DELINEATING DETAIL FOR EQUIPMENT PARKING OR STORING AREA**



**DETAILS FOR TYPICAL PLACEMENT OF TYPE III BARRICADES INSIDE OF CLEAR ZONE**



**DETAILS FOR TYPICAL PLACEMENT OF TYPE III BARRICADES OUTSIDE OF CLEAR ZONE**

NOTES

- SLOPE OF STRIPES ON BARRICADES SHALL BE IN ACCORDANCE WITH SECTION 6F.68 OF THE MUTCD AND DRAWING B-107-2.
- IF SIGNS ARE REQUIRED TO BE USED IN CONJUNCTION WITH TYPE III BARRICADES TO BE PLACED INSIDE THE CLEAR ZONE, THEY SHALL BE POST MOUNTED TO THE SIDE OF THE BARRICADES AS SHOWN.
- IF ROAD CLOSED OR DETOUR SIGNS ARE REQUIRED TO BE USED WITH TYPE III BARRICADES TO BE PLACED OUTSIDE THE CLEAR ZONE, THEY SHALL BE PLACED ON THE TOP OF THE BARRICADES NEAREST THE DETOUR.

NOT TO SCALE

--SPECIFICATIONS--  
CURRENT ALABAMA DEPARTMENT OF TRANSPORTATION



**ALABAMA DEPARTMENT  
OF TRANSPORTATION**  
1400 COLLENUM BOULEVARD  
MONTGOMERY, AL 36106-3000

THIS DRAWING REPRESENTS DESIGNS PREPARED FOR USE BY THE ALABAMA DEPARTMENT OF TRANSPORTATION AND IS NOT TO BE COPIED, REPRODUCED, ALTERED, OR USED BY ANYONE, OR ANY ORGANIZATION, WITHOUT THE EXPRESSED WRITTEN CONSENT OF THE ALABAMA DEPARTMENT OF TRANSPORTATION REPRESENTATIVE. AUTHORIZED TO APPROVE THIS USE. ANYONE MAKING UNAUTHORIZED USE OF THIS DRAWING MAY BE PROSECUTED TO THE FULLEST EXTENT OF THE LAW.

REVISIONS:  
Corrected text overlap on 12-4-2021 by D.J.W.

DESIGN BY: D.J.W.  
DRAWN BY: \_\_\_\_\_  
DATE DRAWN: \_\_\_\_\_  
REVISED DATE: 12-8-2021

DESIGN BUREAU SPECIAL DRAWING  
STANDARD DETAILS FOR  
TRAFFIC CONTROL PLANS

SPECIAL DRAWING NO  
SPECIAL PROJECT DETAIL

INDEX NO  
2001